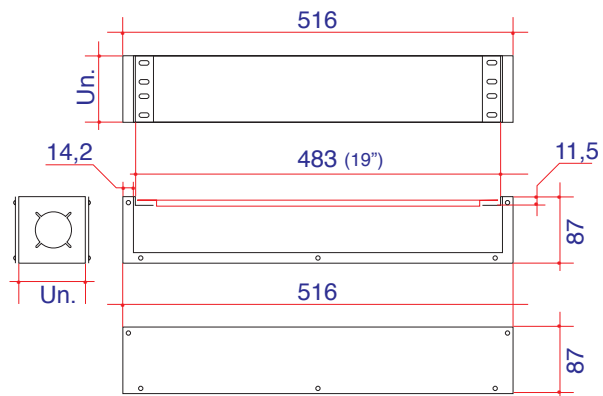


## CAIXA p/ PAINES de 19" 1, 2, 3, 4, 5, 6, 7 Un.



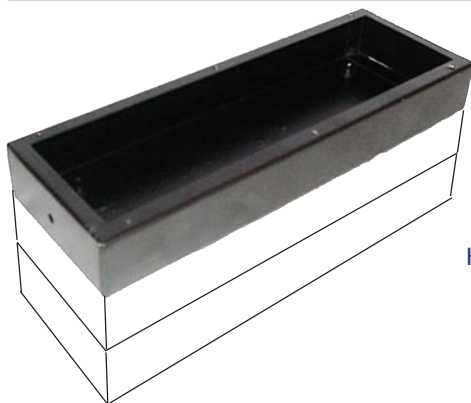
Un	mm	Código	Furo Lateral	Tipo Furo
1	45	ACX.01.119	LK-25/37	A1
2	90	ACX.01.219	LK-85/150	B2
3	134	ACX.01.319	LK-85/150	B2
4	179	ACX.01.419	LK-85/200	B2
5	223	ACX.01.519		
6	268	ACX.01.619		
7	212,5	ACX.01.719		



Exemplo de aplicação

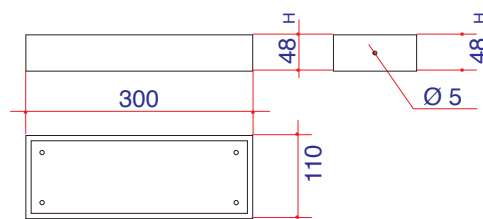


## CAIXA p/ PAINEL c/ 300x110 p/ 8, 12, 16 XLR



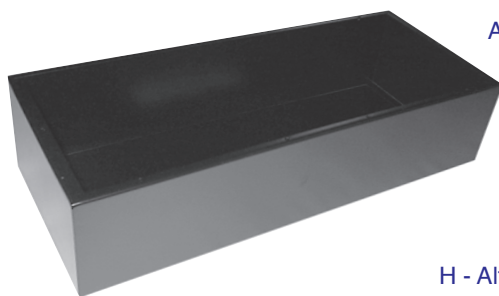
ACX.02.300  
ACX.02.305  
ACX.02.306

H - Altura da Caixa



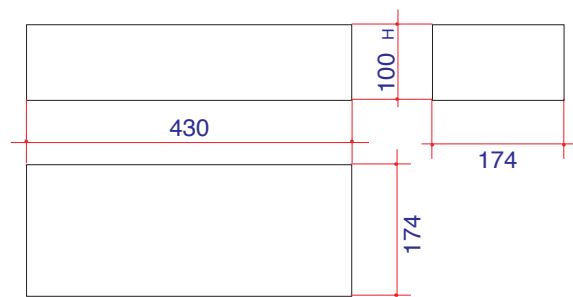
H - 48  
H - 60  
H - 100

## CAIXA p/ PAINEL c/ 19" x 4 Un



ACX.02.307

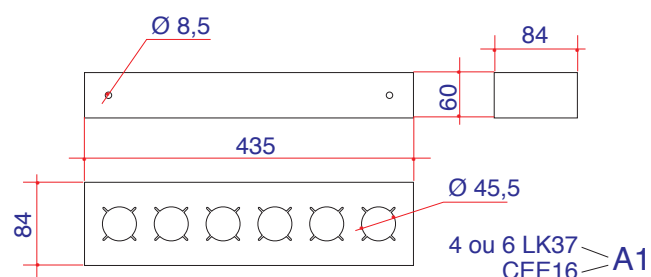
H - Altura da Caixa



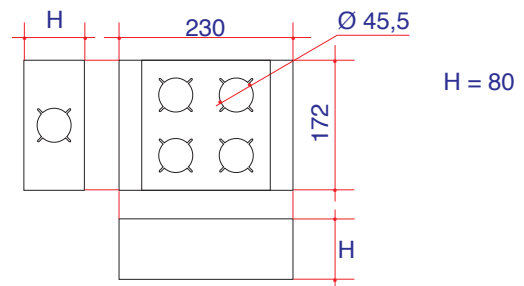
## CAIXA p/ SUSPENSÃO em TRUSS



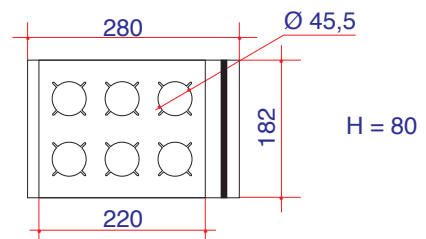
ACX.06.240



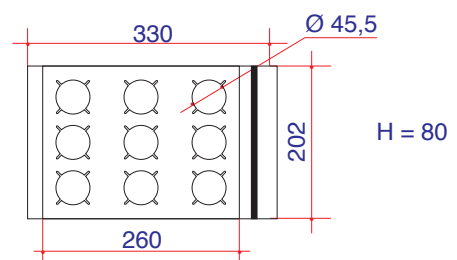
# BOXE / CAIXA de Distribuição de Energia



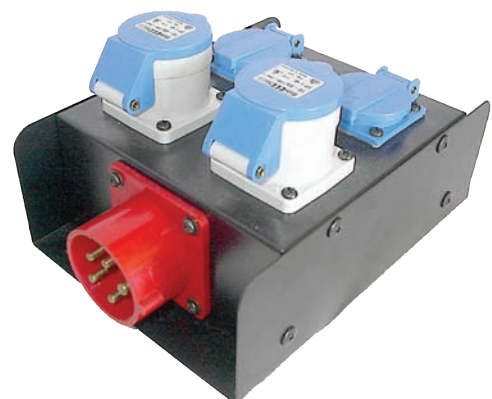
ACX.03.004



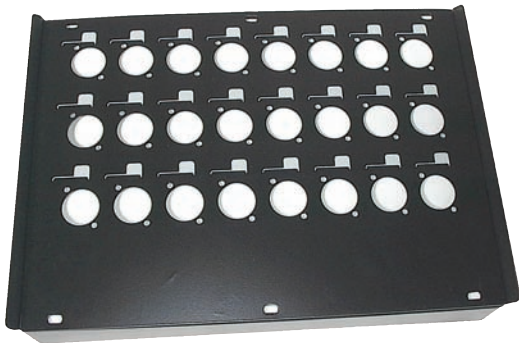
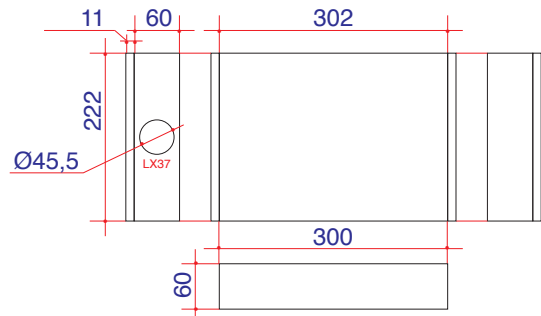
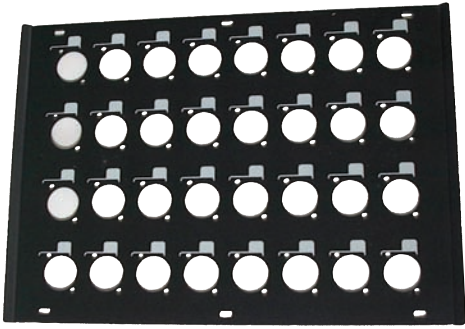
ACX.03.006



ACX.03.009

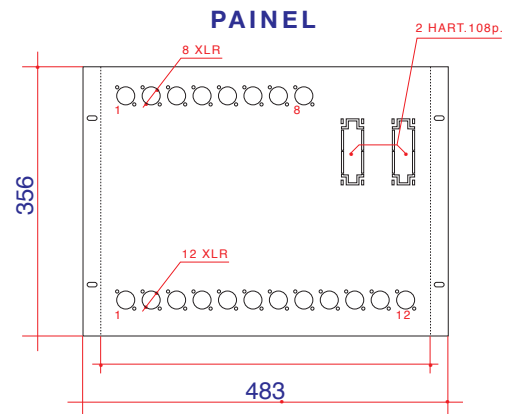
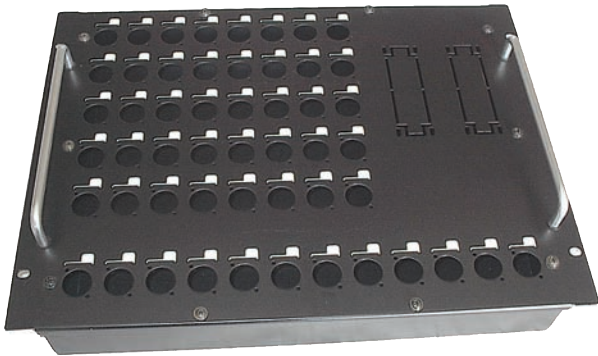
Exemplos  
de  
aplicação

## CAIXA (BOX) P/ 24 E 32 XLR

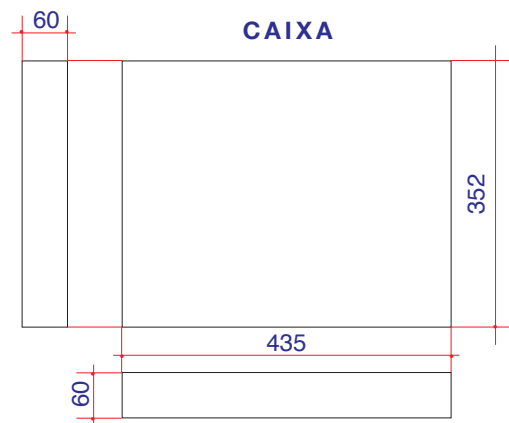


ACX.05.324  
ACX.05.332

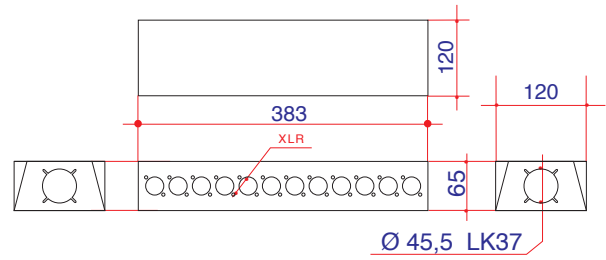
## CAIXA (BOX) DE 8 un. 19" P/ 24, 32, 40; +12 XLR



ACX.08.124  
ACX.08.132  
ACX.08.140



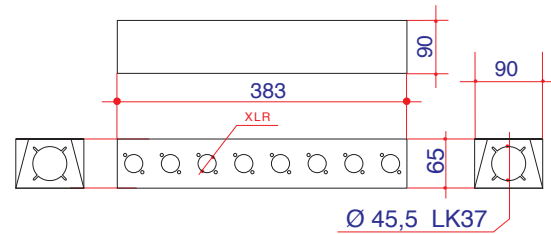
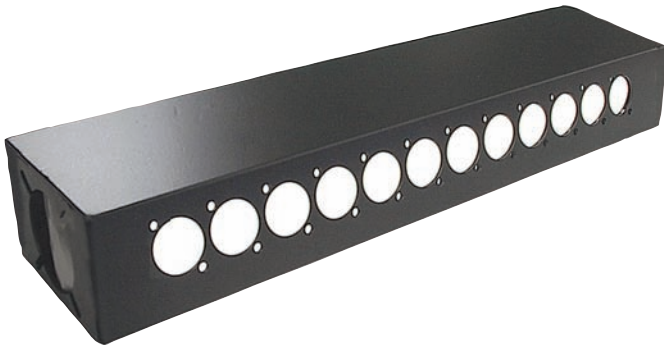
## CAIXA TRAPEZOIDAL para 24 e 12 XLR



AC X . 06 . 112

AC X . 06 . 124

## CAIXA TRAPEZOIDAL para 8, 12, 16; XLR

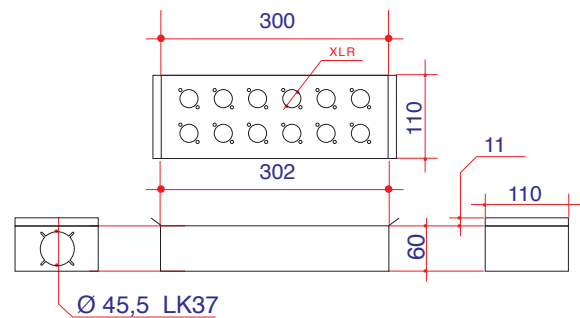


AC X . 06 . 008

AC X . 06 . 012

AC X . 06 . 016

## CAIXA (BOX) para 6, 8, 12, 16; XLR

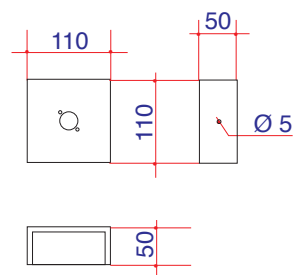
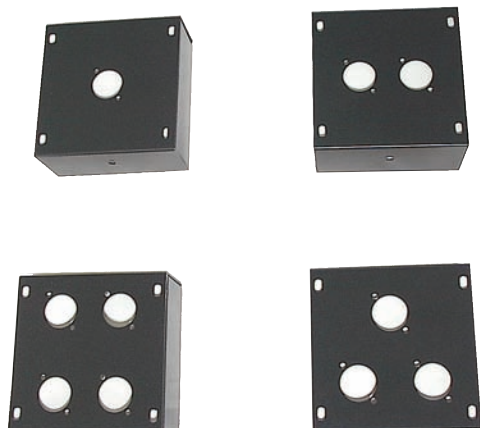


AC X . 05 . 306

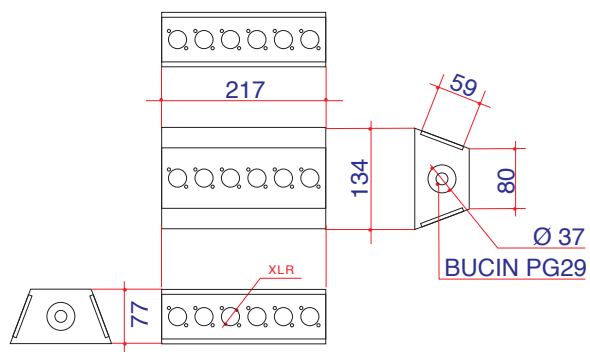
AC X . 05 . 308

AC X . 05 . 312

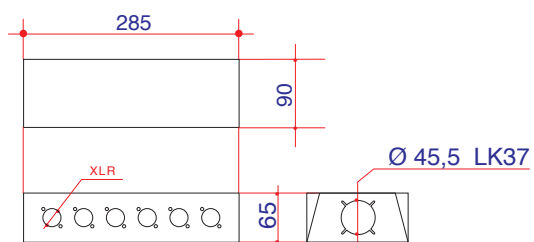
AC X . 05 . 316

**CAIXA (BOX) p/ 1, 2, 3, 4 F. XLR**


**AC X.11.110**  
**AC X.12.110**  
**AC X.13.110**  
**AC X.14.110**

**CAIXA (BOX) configurável até 18 F. XLR**


**AC X.18.135**

**CAIXA TRAPEZOIDAL de 6 a 16 F. XLR**


**AC X.07.006**  
**AC X.07.008**  
**AC X.07.012**  
**AC X.07.016**